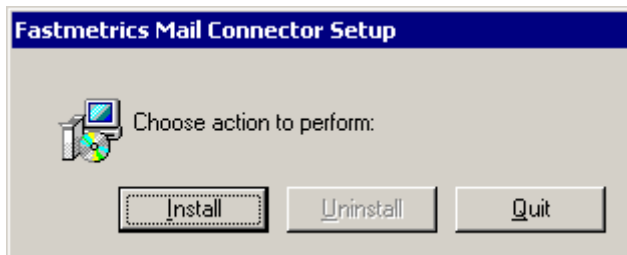


MAPI Installation Procedures

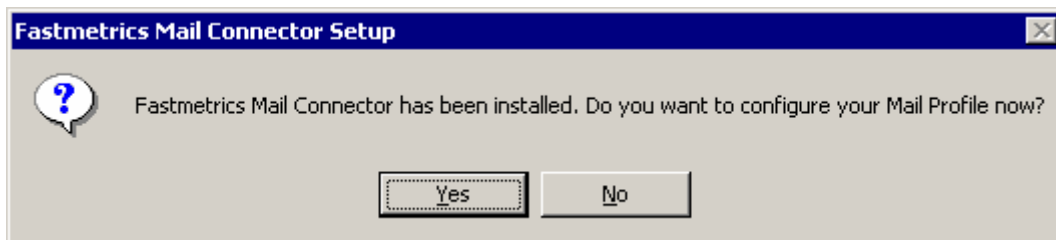
Download the MAPI connector from our web site at the following location.
<http://www.fastmetrics.com/downloads/>

Open the MAPI connector using WinZip or the built-in window compression utility.

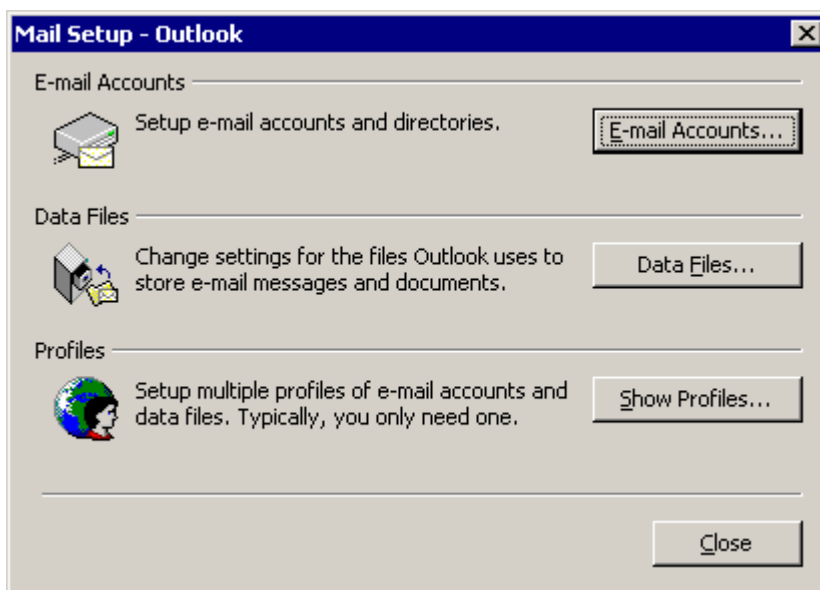
Open the Installer and follow the prompts.



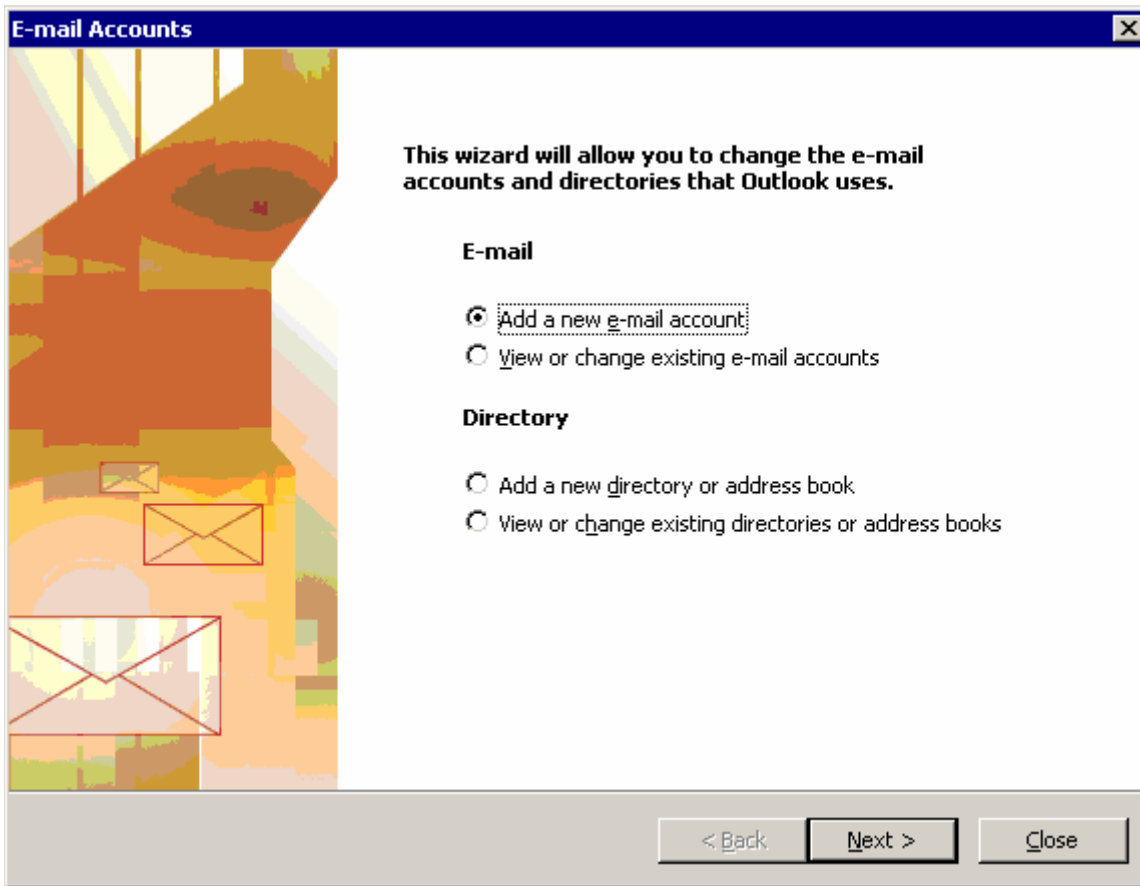
Once the connector has been installed you will need to configure your Mail Profile.



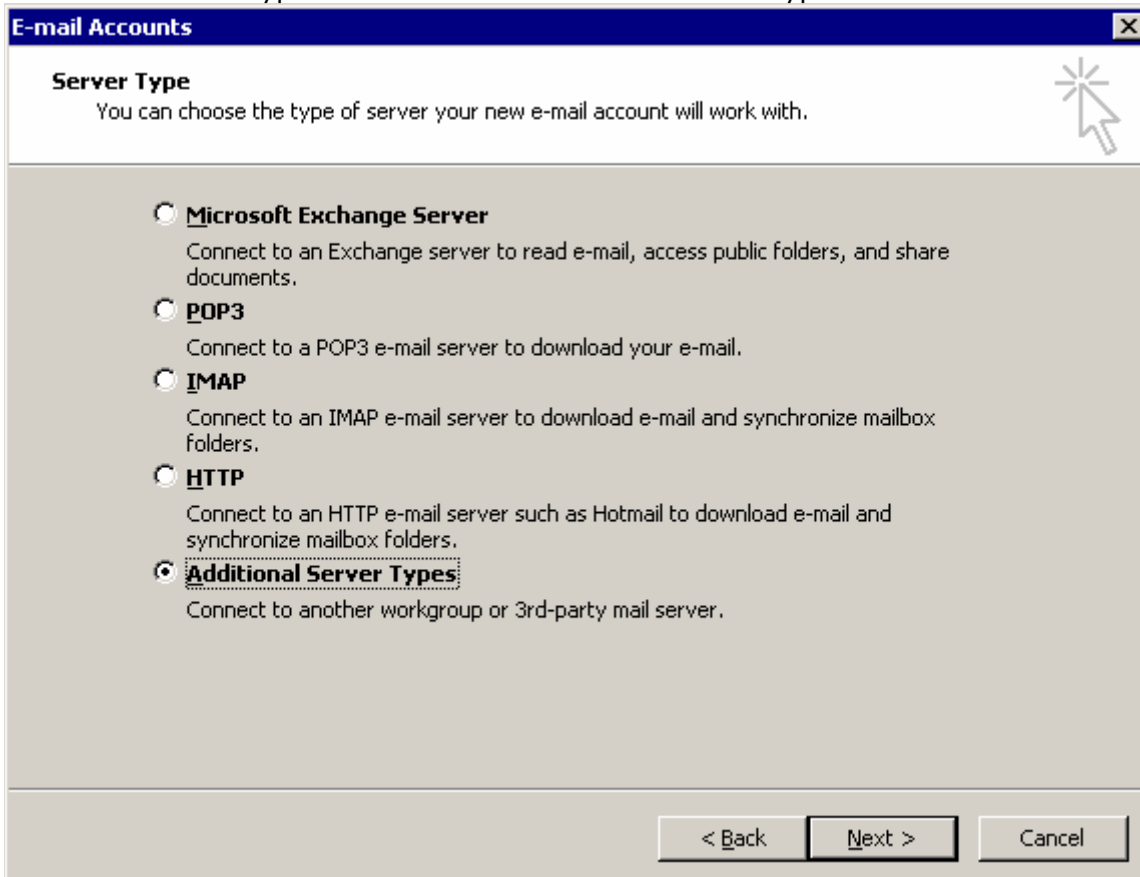
Click on Yes and you will be greeted by the Mail Setup window. Click on "E-Mail accounts."



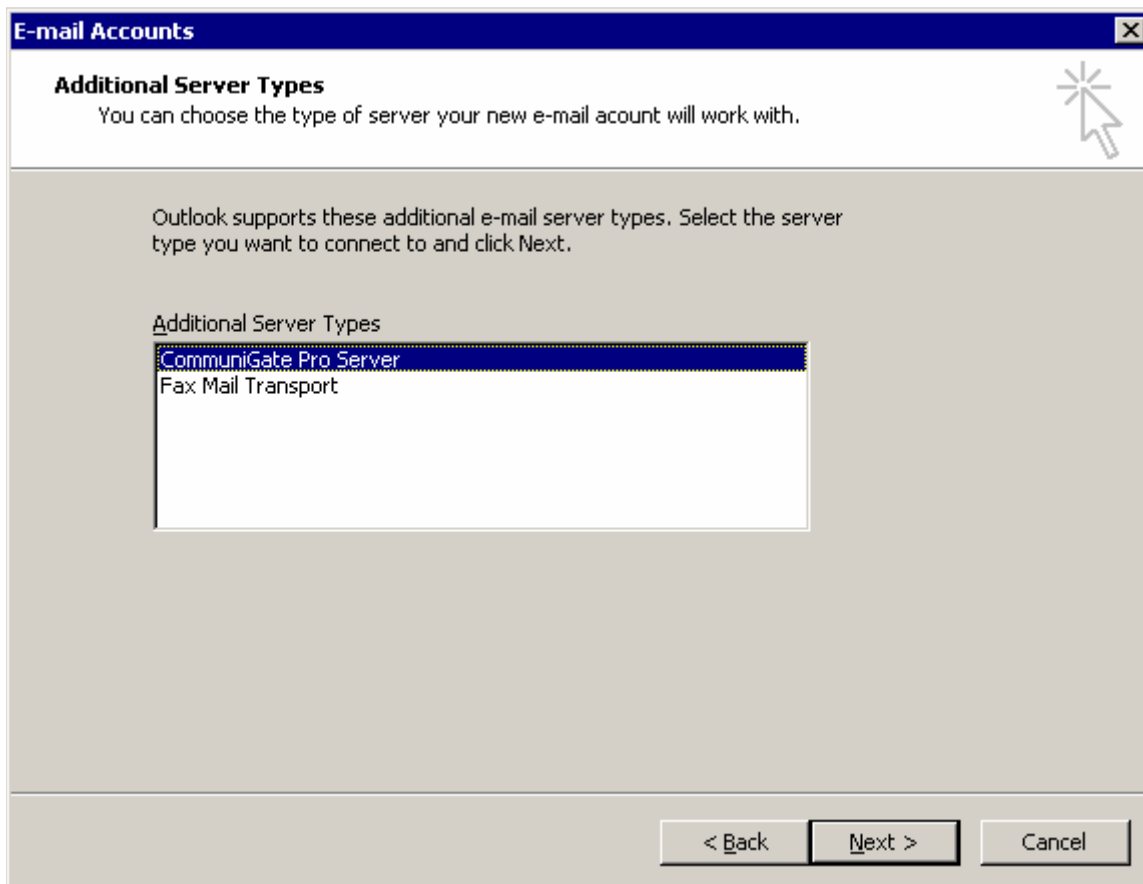
Within the E-mail accounts window select "Add a new e-mail account" and click next.



Under the Server Type window select "Additional Server Types" and click on next.



Under the E-mail accounts window select "Fastmetrics/CommuniGate Pro Server" and click Next.



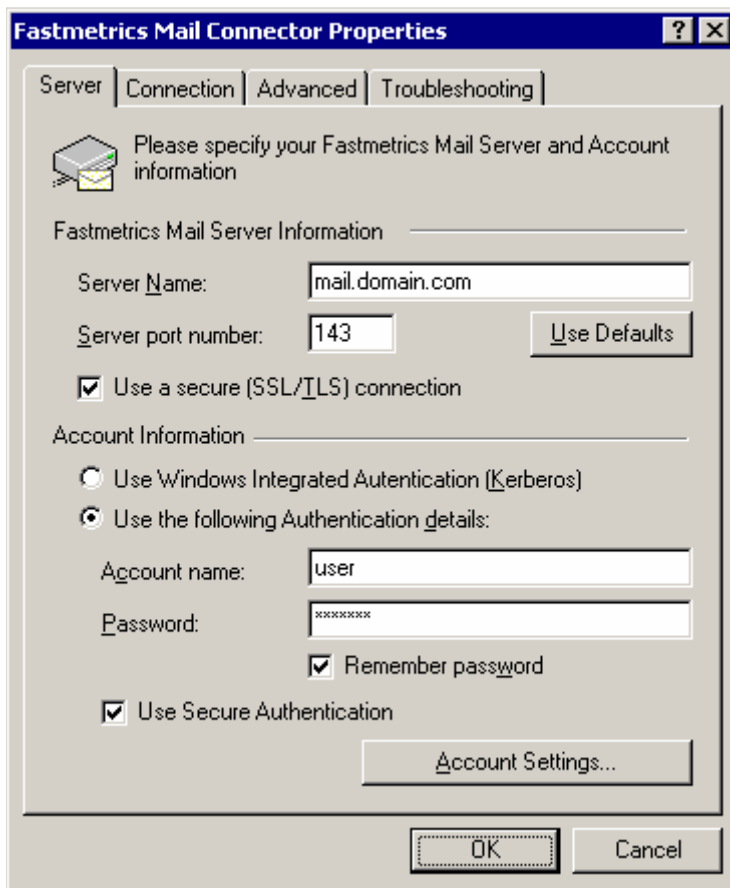
Within the "Fastmetrics/CommuniGate Mail Connector Properties" window please fill out the following information.

Server Name: mail.yourdomain.com

Server Port Number: Leave at 143

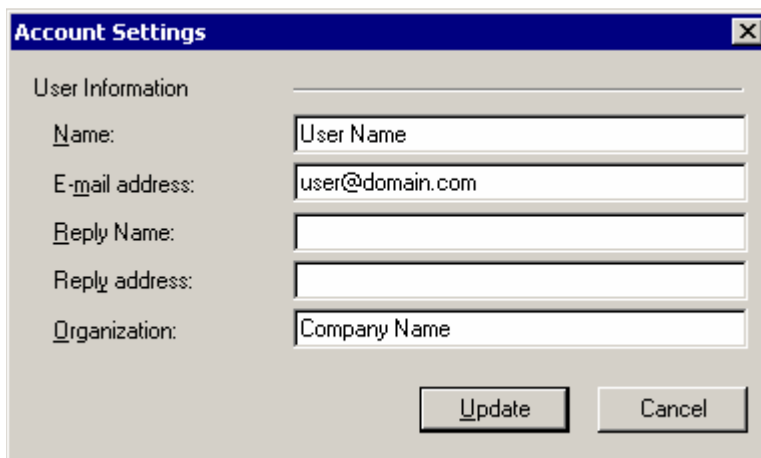
Use a Secure (SSL/TLS) connection: This is optional, in case you want all of your email transactions to be using SSL security for all connections, this slows down your mail.

Account Information: Select "Use the following authentication details" and type in your Username & Password for your account. Click on "the remember Password" and then click on the "Advanced Tab."



The image shows the 'Fastmetrics Mail Connector Properties' dialog box with the 'Advanced' tab selected. It contains fields for 'Server Name' (mail.domain.com) and 'Server port number' (143). There are checkboxes for 'Use a secure (SSL/TLS) connection', 'Use Secure Authentication', and 'Remember password'. Under 'Account Information', the 'Use the following Authentication details' radio button is selected, with fields for 'Account name' (user) and 'Password'. An 'Account Settings...' button is located at the bottom of the dialog.

Click on Account Settings and type in your First and Last name into the input box and your email address, **user@yourdomain.com**.



The image shows the 'Account Settings' dialog box. It has a 'User Information' section with the following fields: 'Name' (User Name), 'E-mail address' (user@domain.com), 'Reply Name', 'Reply address', and 'Organization' (Company Name). There are 'Update' and 'Cancel' buttons at the bottom.

Click on Update, then OK to close out the window and start using your new Fastmetrics Mail setup.

If you have any issues or need technical support, please send an email to support@fastmetrics.com or in case of email failure call the following support numbers.

415-778-5100 x3 (Mon-Fri 6AM-6PM)

415-778-5102 (After Hours Pager Dispatch) for emergencies only

Regards,
FASTMETRICS SUPPORT
support@fastmetrics.com
415-778-5100 x3